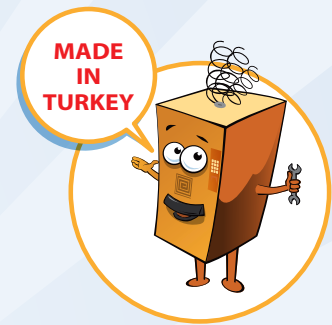


**She sells,
You earn!**[®]

Tru-VEND[®]

SALES & SERVICE VENDING MACHINES

MIDI MOBI[®] VENDING MACHINE



LARGE LCD DISPLAY
CAPACITIVE TOUCH KEYPAD
PAYMENT SYSTEMS (OPTIONAL)
GSM/GPRS TELEMETRY SYSTEM
CHANGE GIVER
IR PRODUCT DELIVERY SENSOR
COIN SELECTOR
EASY PRODUCT LOADING
DIGITAL PIN CODE ENTRY
20 DIFFERENT PRODUCTS

MAX SIZE/CAPACITY RATIO
ALARM FEATURE
EVA-DTS
ENVIRONMENTAL FRIENDLY
FAST & RELIABLE SERVICE
PECULIAR DESIGN

ROBUST METAL COIN ENTRY SLOT
ILLUMINATED ADVERTISEMENT PANEL
EASY MODULAR ELECTRONIC FRONT PLATE
VANDAL PROOF IP 65 METAL KEYPAD (OPTIONAL)



FEATURES

- International Norms, in conformity with CE and produced under ISO 9001: 2008 QMS
- Robust Design, preventing forced external damages, which allows vending of valuable items.
- Slim Attractive Design.
- Perfect for selling unusually small items.
- Two levels with 10 selections each.
- Advertisement panel for displaying demo products.
- Supports MDB/Executive protocols for payment systems,
- Cashless Payment Systems, Credit Card, Change Giver, Bill Validator and/or Coin Selector or combinations
- EVA-DTS with GPRS support (Optional)
- Easy selection & pricing feature.
- Easy-to-use LCD display
- BITE (Built-in Test Equipment) automatically fixing problems and/or displaying Warning Messages on LCD
- IR product sensors to control delivery
- Secure alarm system to prevent vandalism or burglary
- Electro Mechanical Secure Locking System.
- Electrical current leakage prevention system.
- 220V 50 Hz Power Supply
- Project based quantity orders for custom made special vendors

MAIN BOARD FEATURES

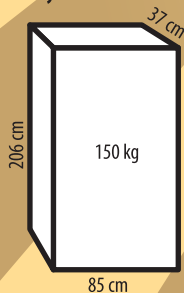
- 27 VDC 2A Input Voltage
- 96 pcs (8 Trays x 12) full function motor control (Motor Control Software)
- 4 different Relay Controls
- MDB-EXECUTIVE-CCTALK-PARALLEL and hardware interfaces
- 2 RS485 ports (Communication with IR Product Sensor and other applications)
- 2 Handshake RS232 Ports
- 1 TTL RS232 Port
- 1 External IIC Communication Port for Touchpad Keypad
- 1 SPI Port Supporting 2 Devices (Ethernet, Wireless, SD/MMC Card etc. modules)
- 8 Analogue Entries (0 – 3.3V) For Analogue sensors
- 16 x (0-5 V) Digital Input
- 8 x (0-50V) Digital Input
- 2 different 1wire Input (for 1 wire sensors)
- Illumination Adjustment Control Output
- High Volume Alarm Sound Output
- Graphical LCD and Character LCD Support
- High Performance 16 bit processor
- 64 KBIT external EEPROM (may be increased with external slot)
- Mbit External Flash for log records
- Real Time Time/Date Function
- Bluetooth Communication Availability



2 Trays
20 Selections



Physical Features

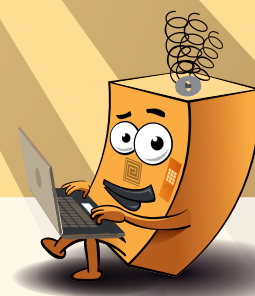


Electrical Features:
Operating Voltage: : 220V AC +- %10- 50 Hz
Power: : 70W



 **ELEKTRAL**[®]
Since 1978

Izmir Ataturk Industrial Zone
M. Kemal Ataturk Blv. 23-25 Cigli, 35620 Izmir / TURKEY
Tel: +90 232 376 7300 Faks: +90 232 376 7030 elektral@elektral.com.tr



www.elektral.com.tr